

# Where in the world is Spanish spoken?



It is the official language or one of the official languages in:

**Mexico**

**Guatemala  
Honduras  
El Salvador  
Nicaragua  
Costa Rica  
Panama**

**Cuba  
Dominican  
Republic  
Puerto Rico**

**Venezuela  
Colombia  
Ecuador  
Peru  
Bolivia  
Chile  
Paraguay  
Uruguay  
Argentina**

**Spain**



It is spoken by a significant number of people in:

**Belize  
US Virgin Islands  
Nederland Antilles  
Barbados  
Trinidad & Tobago**

**Andorra**

**The United States of America**



## Speaking of Spain

Find each word in the puzzle, then write the leftover letters in order, top to bottom and left to right, to reveal the hidden message.

P	Y	R	E	N	E	E	S	S	A	N	F	E	G	M
R	R	M	I	X	M	N	M	E	L	I	L	L	A	U
A	I	N	C	A	T	A	L	O	N	I	A	P	L	R
D	A	M	N	B	A	R	C	E	L	O	N	A	I	C
O	P	C	L	G	O	C	E	U	T	A	N	N	C	I
C	H	O	R	I	Z	O	A	M	I	D	N	C	I	A
A	L	U	D	B	C	A	N	T	A	B	R	I	A	E
N	A	V	A	R	R	E	S	L	T	D	H	B	E	H
A	F	A	B	A	S	Q	U	E	M	O	U	E	O	U
R	S	E	N	L	C	S	B	A	L	E	A	R	I	C
Y	C	A	S	T	I	L	L	A	R	R	N	I	A	I
E	R	R	V	A	L	E	N	C	I	A	O	A	O	R
A	S	T	U	R	I	A	S	O	Z	R	G	N	U	N
M	A	D	R	I	D	N	J	O	I	L	E	O	N	N
G	O	F	T	H	E	A	B	U	L	L	S	X	N	X

- ANDALUSIA
- ARAGON
- ASTURIAS
- BALEARIC
- BARCELONA
- BASQUE
- CANARY
- CANTABRIA
- CASTILLA
- CATALONIA
- CEUTA
- CHORIZO
- EXTREMADURA
- GALICIA
- GIBRALTAR
- HORNAZO
- IBERIAN
- LEON
- MADRID
- MANCHA
- MELILLA
- MURCIA
- NAVARRE
- PRADO
- PYRENEES
- RIOJA
- VALENCIA

The festival of

\_\_\_\_\_

\_\_\_\_\_

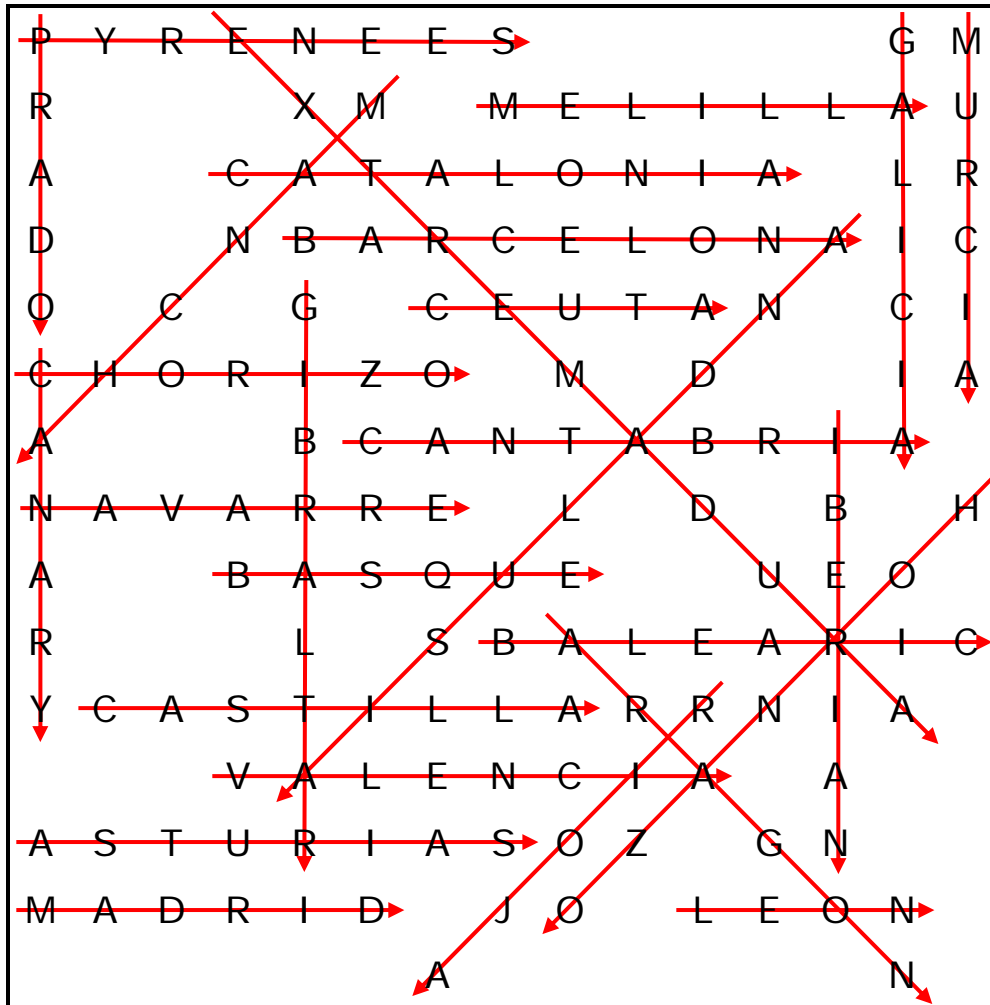
\_\_\_\_\_

\_\_\_\_\_ .



# Speaking of Spain KEY

Find each word in the puzzle, then write the leftover letters in order, top to bottom and left to right, to reveal the hidden message.



The festival of

San Fermín in Pamplona includes the famous  
encierro or running of the bulls.



## Searching Mexico

Find each word in the puzzle, then write the leftover letters in order, top to bottom and left to right, to complete the message.

C	O	H	B	U	L	L	F	I	G	H	T	I	N	G
M	I	L	H	U	O	A	Z	A	P	O	T	E	C	F
R	A	H	M	B	E	I	S	B	O	L	U	A	N	U
I	D	Y	T	E	E	S	E	G	R	C	G	T	S	E
V	V	U	A	I	C	T	E	R	E	U	T	C	H	N
E	F	E	H	E	J	I	S	F	A	E	R	O	A	T
R	M	M	R	T	D	U	M	D	A	R	R	I	C	E
A	Z	O	O	A	O	N	A	A	I	N	N	H	I	S
E	Z	N	C	W	C	L	M	N	E	A	A	U	E	H
X	I	T	C	T	A	R	T	O	A	V	Z	I	N	I
T	E	E	E	J	E	X	U	E	E	A	A	C	D	D
S	D	R	A	C	O	Z	W	Z	C	C	N	H	A	A
Z	E	R	A	U	J	I	U	N	T	A	O	O	S	L
N	A	E	C	E	T	X	I	M	O	R	T	L	H	G
C	E	Y	N	T	R	A	A	C	A	P	U	L	C	O

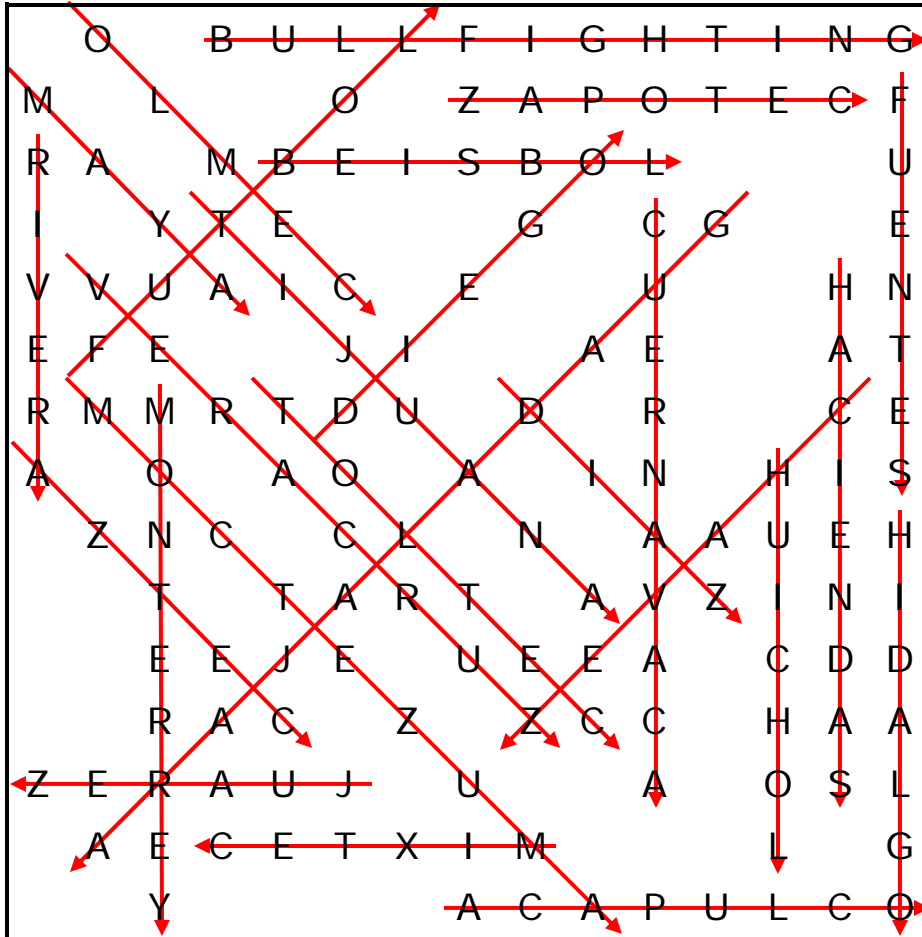
- ACAPULCO
- AZTEC
- BEISBOL
- BULLFIGHTING
- CHAVEZ
- CUERNAVACA
- DIAZ
- DIEGO
- FUENTES
- FUTBOL
- GUADALAJARA
- HACIENDAS
- HIDALGO
- HUICHOL
- JUAREZ
- MAYA
- MIXTEC
- MOCTEZUMA
- MONTERREY
- OLMEC
- RIVERA
- TIJUANA
- TOLTEC
- VERACRUZ
- ZAPOTEC

The \_\_\_\_\_  
 \_\_\_\_\_  
 \_\_\_\_\_,  
 \_\_\_\_\_, & \_\_\_\_\_  
 \_\_\_\_\_ I Mexico.



# Searching Mexico KEY

Find each word in the puzzle, then write the leftover letters in order, top to bottom and left to right, to complete the message.



- ACAPULCO
- AZTEC
- BEISBOL
- BULLFIGHTING
- CHAVEZ
- CUERNAVACA
- DIAZ
- DIEGO
- FUENTES
- FUTBOL
- GUADALAJARA
- HACIENDAS
- HIDALGO
- HUICHOL
- JUAREZ
- MAYA
- MIXTEC
- MOCTEZUMA
- MONTERREY
- OLMEC
- RIVERA
- TIJUANA
- TOLTEC
- VERACRUZ
- ZAPOTEC

The Chihuahuan Desert stretches

from Arizona, New Mexico, & Texas

down into north central Mexico.

## Which does not fit? MEXICO

Circle the letter of the best answer for each question.



1. Which country does not border Mexico?  
A. the United States                      C. Guatemala  
B. Belize                                      D. Honduras
2. Which indigenous tribe did not once live in what is now Mexico?  
A. Maya                                      C. Aztec  
B. Inca                                        D. Zapotec
3. Which problem is not a major issue for Mexico?  
A. excess of skilled workers            C. environmental pollution  
B. water shortages                        D. loss of skilled workers
4. Which North American physical feature is not in Mexico?  
A. Mesa Central                            C. Copper Canyon  
B. Chihuahuan Desert                    D. Mojave Desert
5. Which of these is not the name of a Mexican state?  
A. Sonora                                    C. Chihuahua  
B. Morelia                                    D. Puebla
6. Which animal is not found in Mexico?  
A. crocodile                                C. leopard  
B. parrot                                     D. spider monkey
7. Which of these is not a significant part of Mexican life?  
A. horseracing                              C. soccer  
B. Catholic Church                        D. fiestas
8. Which food is not one of the top crops in Mexico?  
A. corn                                        C. bananas  
B. wheat                                      D. sugarcane

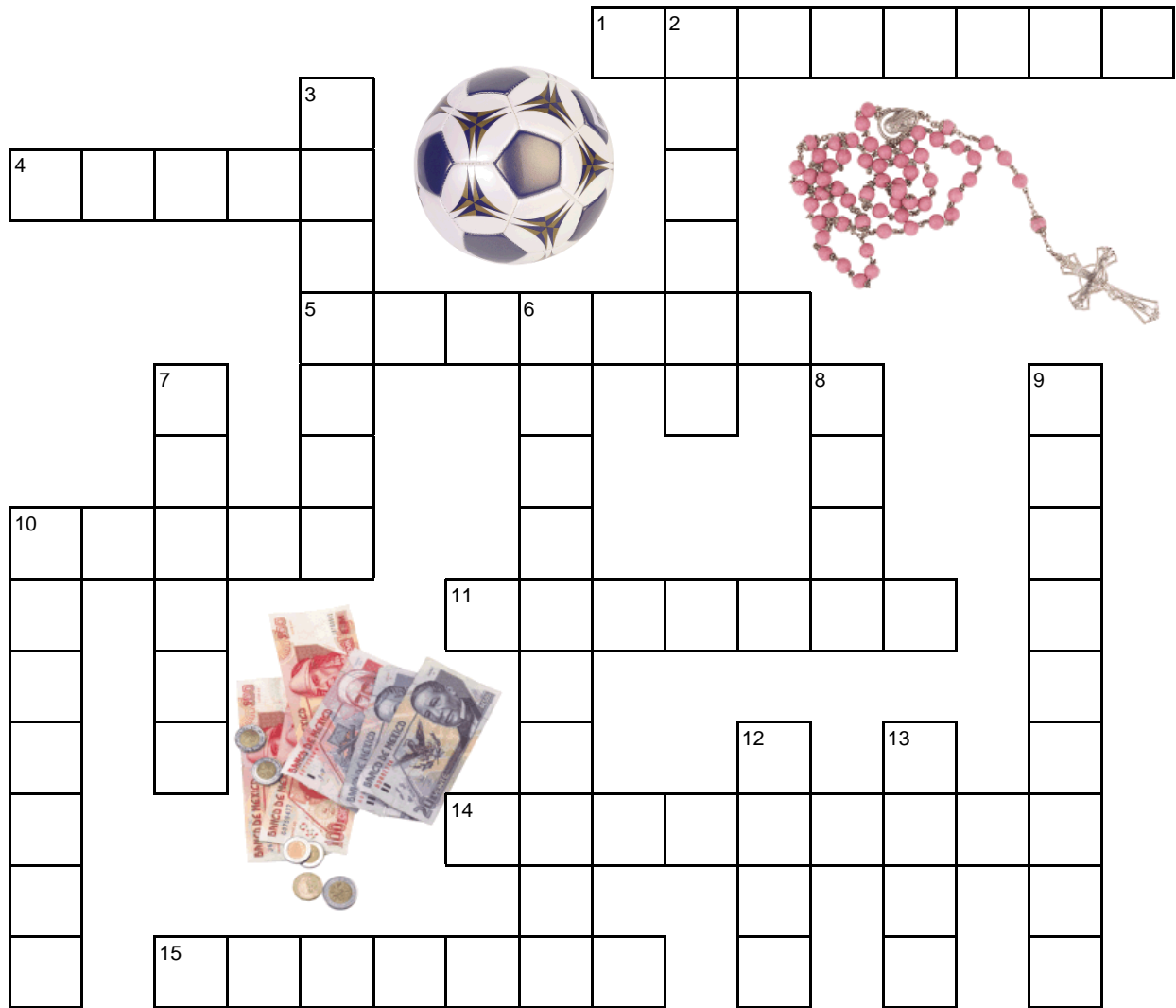


## Which does not fit? MEXICO KEY

Circle the letter of the best answer for each question.

1. Which country does not border Mexico?  
A. the United States                      C. Guatemala  
B. Belize                                      D. Honduras
2. Which indigenous tribe did not once live in what is now Mexico?  
A. Maya                                      C. Aztec  
B. Inca                                        D. Zapotec
3. Which problem is not a major issue for Mexico?  
A. excess of skilled workers            C. environmental pollution  
B. water shortages                        D. loss of skilled workers
4. Which North American physical feature is not in Mexico?  
A. Mesa Central                            C. Copper Canyon  
B. Chihuahuan Desert                    D. Mojave Desert
5. Which of these is not the name of a Mexican state?  
A. Sonora                                    C. Chihuahua  
B. Morelia                                    D. Puebla
6. Which animal is not found in Mexico?  
A. crocodile                                C. leopard  
B. parrot                                     D. spider monkey
7. Which of these is not a significant part of Mexican life?  
A. horseracing                              C. soccer  
B. Catholic Church                        D. fiestas
8. Which food is not one of the top crops in Mexico?  
A. corn                                        C. bananas  
B. wheat                                      D. sugarcane

# The United Mexican States (Mexico)



## Down

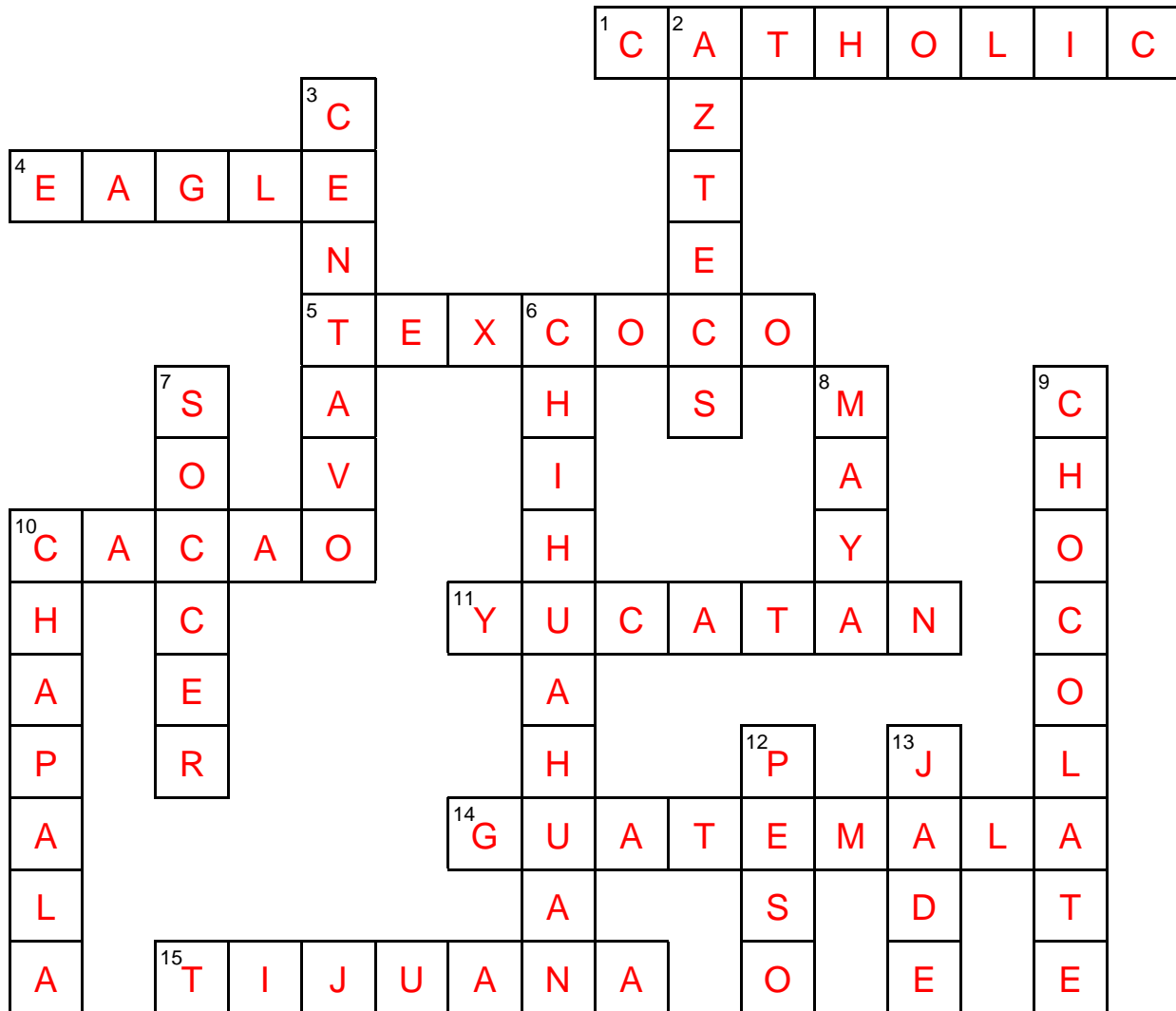
2. civilization that built Tenochtitlan
3. currency unit - 1/100 of a peso
6. largest desert in N. America
7. Mexico's favorite sport
8. ancient civilization of Yucatan
9. drink at Maya ceremonies
10. largest lake in Mexico
12. Mexico's unit of currency
13. green stone in Maya ornaments

## Across

1. most Mexicans share this religion
4. bird on Mexican flag
5. lake in the Valley of Mexico
10. tree giving us chocolate
11. peninsula in southeast Mexico
14. country on the SE border of Mexico
15. city very close to California



# The United Mexican States (Mexico) **KEY**



## Down

2. civilization that built Tenochtitlan
3. currency unit - 1/100 of a peso
6. largest desert in N. America
7. Mexico's favorite sport
8. ancient civilization of Yucatan
9. drink at Maya ceremonies
10. largest lake in Mexico
12. Mexico's unit of currency
13. green stone in Maya ornaments

## Across

1. most Mexicans share this religion
4. bird on Mexican flag
5. lake in the Valley of Mexico
10. tree giving us chocolate
11. peninsula in southeast Mexico
14. country on the SE border of Mexico
15. city very close to California



## Searching Argentina

Find each word in the puzzle, then write the leftover letters in order, top to bottom and left to right, to complete the message.

H	D	U	H	A	L	D	E	E	R	P	C	U	Y	O
G	A	U	C	H	O	W	P	D	M	A	E	S	B	A
E	E	C	O	F	I	A	C	A	E	R	T	R	T	C
L	E	M	A	C	M	G	H	Q	N	A	A	V	O	O
M	B	E	H	P	A	G	U	R	D	N	M	A	Z	N
U	E	I	A	R	Y	E	E	A	O	A	E	D	V	C
P	I	S	D	A	B	B	C	N	Z	A	N	R	I	A
A	E	E	O	R	R	O	A	G	A	U	H	M	Z	G
T	L	V	A	P	R	M	E	R	N	T	I	I	C	U
A	N	C	I	D	O	A	A	S	A	L	R	I	A	A
G	H	N	O	T	C	T	E	D	O	T	E	C	C	H
O	E	B	G	U	A	R	A	N	I	S	S	H	H	T
N	A	I	X	N	T	E	G	M	E	L	N	A	A	O
I	T	H	G	C	E	A	N	T	I	U	L	C	S	B
A	R	O	E	S	T	A	N	C	I	A	S	O	Y	A

ACONCAGUA  
 ARMADILLO  
 CAPYBARA  
 CHACO  
 CORDOBA  
 CUYO  
 DUHALDE  
 ESTANCIAS  
 EVITA  
 GARDEL  
 GAUCHO  
 GUARANI  
 IGUAZU  
 MENDOZA  
 MENHIRES  
 MESOPOTAMIA  
 MILONGA  
 OMBU  
 PAMPAS  
 PARANA  
 PATAGONIA  
 PERON  
 QUEBRACHO  
 TANGO  
 TOBA  
 VIZCACHAS  
 WICHI

\_\_\_\_\_ of \_\_\_\_\_  
 \_\_\_\_\_  
 \_\_\_\_\_  
 \_\_\_\_\_ !



# Searching Argentina KEY

Find each word in the puzzle, then write the leftover letters in order, top to bottom and left to right, to complete the message.

D	U	H	A	L	D	E	P	C	U	Y	O		
G	A	U	C	H	O	W	P	M	A	E	A		
	C	O	I	A				E	R	R	C		
	M	A	C	M	G	Q	N	A	O	O			
M	B	H	P	A	U	D	N	M		N			
U	E	I	A	R	Y	E	A	O	A	E	V	C	
P	S	D	A	B	B	C	Z	N	I	A			
A	E	E	O	R	R	O	A	A	U	H	M	Z	G
T	L	V	A	P	R	M	R	I				C	U
A	C	I	D	O	A	A	L	R	A	A			
G	H	O	T	T	D	O	E	C	C				
O	B	G	U	A	R	A	N	I	S	H	H	T	
N	A		N		G	M	L	A	A	O			
I	G		A		I	L	C	S	B				
A	O	E	S	T	A	N	C	I	A	S	O	A	

ACONCAGUA  
 ARMADILLO  
 CAPYBARA  
 CHACO  
 CORDOBA  
 CUYO  
 DUHALDE  
 ESTANCIAS  
 EVITA  
 GARDEL  
 GAUCHO  
 GUARANI  
 IGUAZU  
 MENDOZA  
 MENHIRES  
 MESOPOTAMIA  
 MILONGA  
 OMBU  
 PAMPAS  
 PARANA  
 PATAGONIA  
 PERON  
 QUEBRACHO  
 TANGO  
 TOBA  
 VIZCACHAS  
 WICHI

Herds of beef cattle  
 have grazed in Argen-  
 tina since the six-  
 teenth century!

# How well do you know ARGENTINA ?

Circle the letter of the best answer for each question.

1. In which part of South America can you find Argentina?

- A. north
- B. south
- C. northwest
- D. northeast

2. What type of terrain covers most of central Argentina?

- A. dry desert
- B. wetland marsh
- C. pampas
- D. mountains



3. Which mountain range borders Argentina?

- A. Andes
- B. Appalachians
- C. Apennines
- D. Alps

4. Which is a name for the southern part of Argentina?

- A. Mojave Desert
- B. The Cuyo
- C. Patagonia
- D. Mesopotamia

5. Which city is the federal and cultural capital of Argentina?

- A. La Plata
- B. Buenos Aires
- C. Rio de Janeiro
- D. Caracas



6. Which type of dance was invented by Argentines?

- A. polka
- B. rumba
- C. samba
- D. tango

7. What is a cattleman or cowboy most often called in Argentina?

- A. gaucho
- B. llanero
- C. huaso
- D. charro

8. Which of these could be considered the national drink of Argentina?

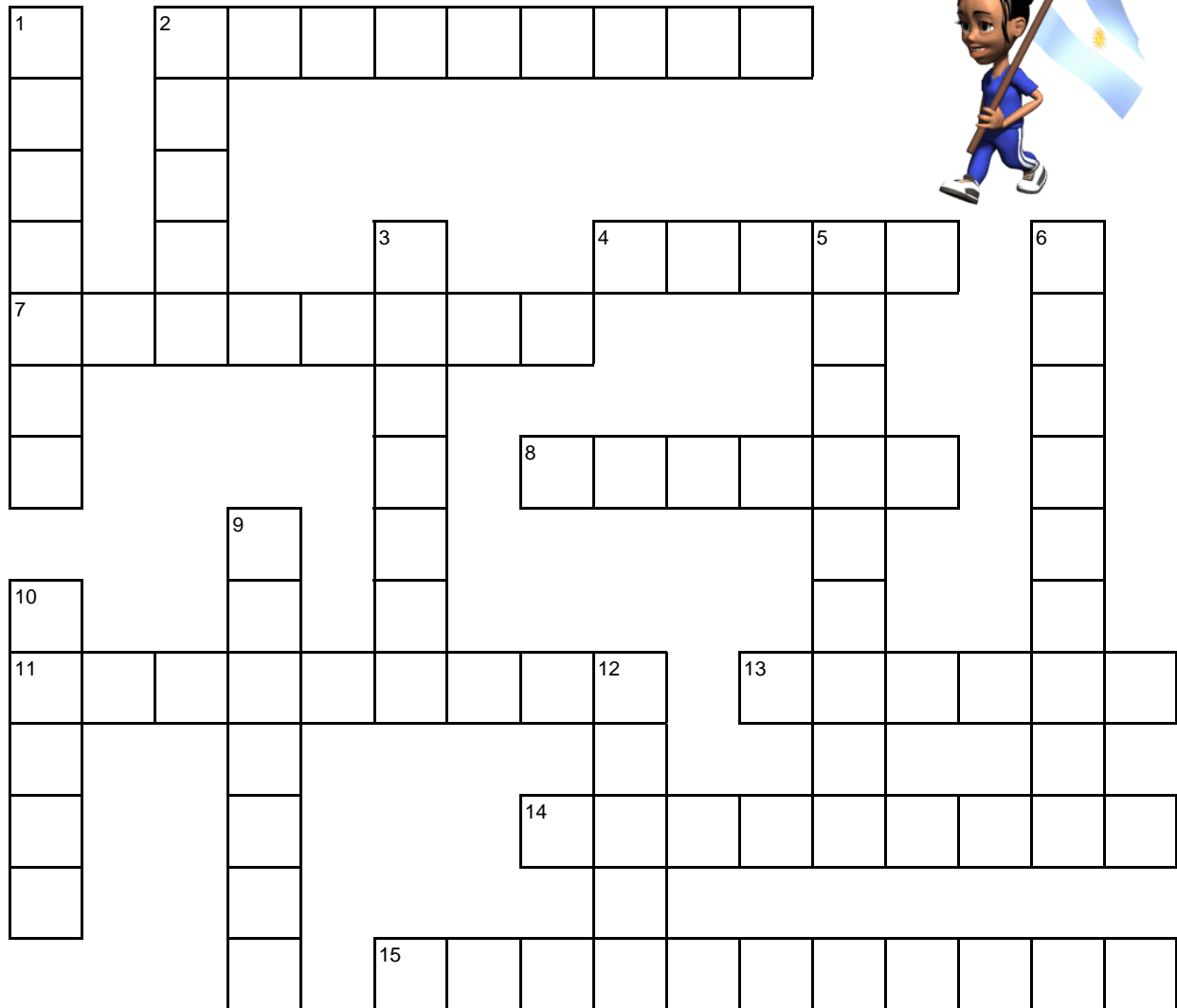
- A. latte
- B. maté
- C. buttermilk
- D. chocolate

## How well do you know ARGENTINA ? **KEY**

Circle the letter of the best answer for each question.

1. In which part of South America can you find Argentina?  
A. north  
**B. south**  
C. northwest  
D. northeast
2. What type of terrain covers most of central Argentina?  
A. dry desert  
B. wetland marsh  
**C. pampas**  
D. mountains
3. Which mountain range borders Argentina?  
**A. Andes**  
B. Appalachians  
C. Apennines  
D. Alps
4. Which is a name for the southern part of Argentina?  
A. Mojave Desert  
B. The Cuyo  
**C. Patagonia**  
D. Mesopotamia
5. Which city is the federal and cultural capital of Argentina?  
A. La Plata  
**B. Buenos Aires**  
C. Rio de Janeiro  
D. Caracas
6. Which type of dance was invented by Argentines?  
A. polka  
B. rumba  
C. samba  
**D. tango**
7. What is a cattleman or cowboy most often called in Argentina?  
**A. gaucho**  
B. llanero  
C. huaso  
D. charro
8. Which of these could be considered the national drink of Argentina?  
A. latte  
**B. maté**  
C. buttermilk  
D. chocolate

## Argentina Criss-cross



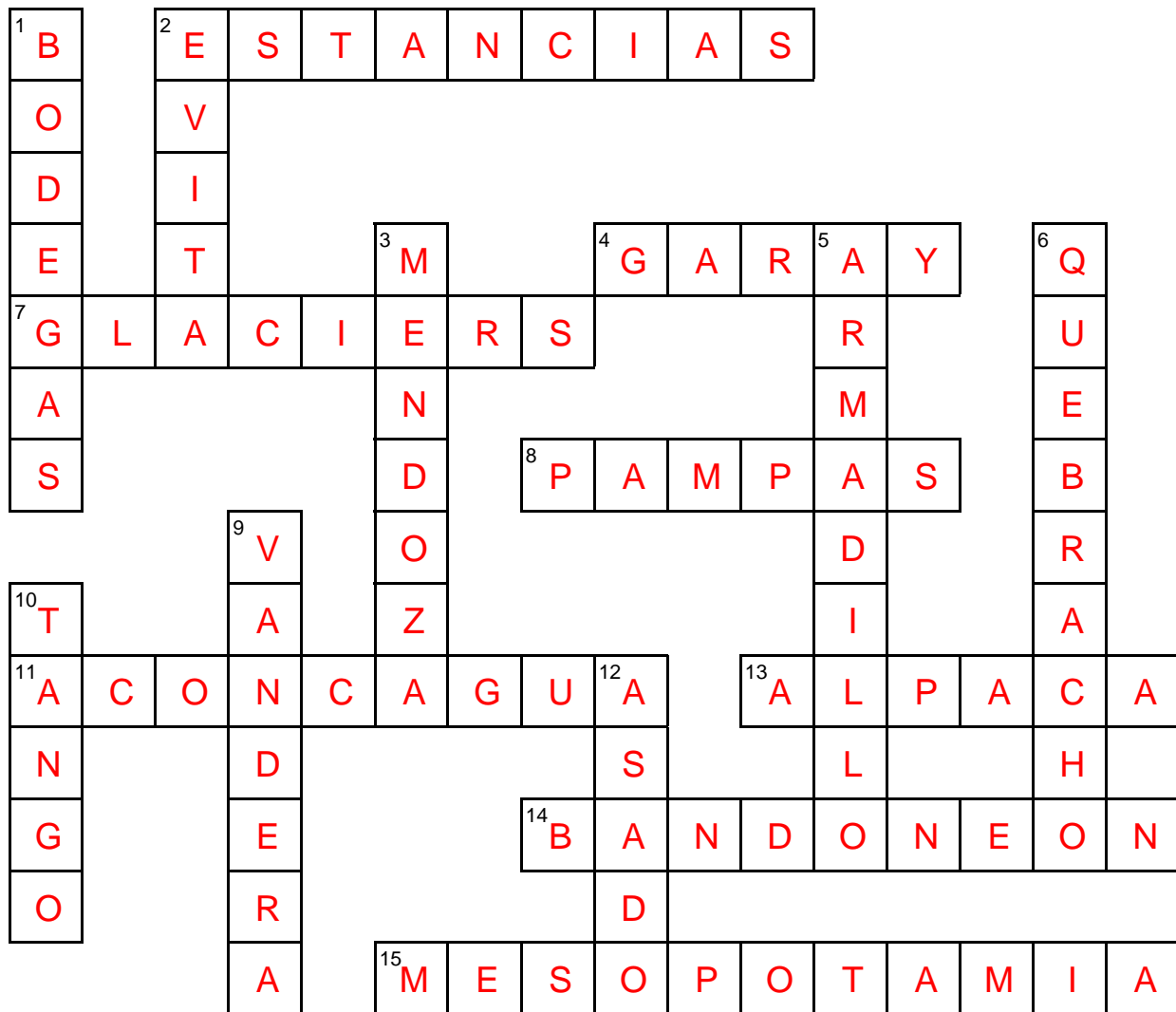
### Down

1. family wineries in the Cuyo region
2. wife of Juan Perón
3. winery province in the west
5. animal name - "small & armored"
6. tree in Chaco region - hard wood
9. Alonso de la \_\_\_\_ - published first truly Argentine literary work
10. music & dance invented in Buenos Aires
12. grilled beef; an outdoor BBQ

### Across

2. Argentine ranches
4. founder of Buenos Aires, Juan de \_\_\_\_
7. icy landmarks of the far south
8. fertile grasslands in the central region
11. highest mountain peak
13. cousin of the camel in Argentina
14. accordion-like instrument used in tango music
15. northeast corner of Argentina

## Argentina Criss-cross KEY



### Down

1. family wineries in the Cuyo region
2. wife of Juan Perón
3. winery province in the west
5. animal name - "small & armored"
6. tree in Chaco region - hard wood
9. Alonso de la \_\_\_\_ - published first truly Argentine literary work
10. music & dance invented in Buenos Aires
12. grilled beef; an outdoor BBQ

### Across

2. Argentine ranches
4. founder of Buenos Aires, Juan de \_\_\_\_
7. icy landmarks of the far south
8. fertile grasslands in the central region
11. highest mountain peak
13. cousin of the camel in Argentina
14. accordion-like instrument used in tango music
15. northeast corner of Argentina



## Searching Chile

Find each word in the puzzle, then write the leftover letters in order, top to bottom and left to right, to complete the message.

T	P	A	N	Q	U	E	H	U	E	R	U	K	A	S
E	A	I	Q	U	I	Q	U	E	C	M	A	M	A	D
M	A	L	P	A	C	A	E	F	E	R	I	A	S	S
P	E	R	L	T	T	I	W	S	N	C	U	E	C	A
A	N	O	R	A	T	I	T	F	O	N	D	A	S	C
N	C	M	C	H	N	I	E	A	R	V	A	N	H	A
A	C	A	H	E	Z	Q	R	I	A	L	L	I	Y	N
D	M	P	S	O	E	P	U	L	T	I	N	M	N	D
A	M	U	S	T	I	S	D	I	T	C	A	E	A	L
S	I	C	H	L	E	I	P	C	H	R	R	N	E	E
D	S	H	L	R	V	L	O	I	A	U	D	I	E	M
S	T	E	T	I	A	P	L	P	D	E	E	L	O	A
A	R	C	A	N	P	L	E	A	S	O	N	A	T	S
A	A	H	O	E	A	E	S	A	N	T	I	A	G	O
E	L	A	R	R	T	H	P	I	N	O	C	H	E	T

- ALPACA
- ALTIPLANO
- ANDES
- ARPILLERA
- ATACAMA
- AYMARA
- CANDLEMAS
- CASTELLANO
- CHINCHILLA
- COPPER
- CUECA
- EMPANADAS
- FERIAS
- FONDAS
- IQUIQUE
- LLANQUIHUE
- MAPUCHE
- MESTIZOS
- MISTRAL
- MOAI
- NERUDA
- PANQUEHUE
- PINOCHET
- RUKAS
- SANTIAGO
- VALDIVIA
- WINES

The A \_\_\_\_\_

\_\_\_\_\_

\_\_\_\_\_

\_\_\_\_\_





# Searching Chile KEY

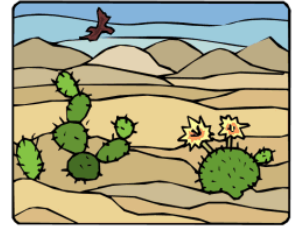
Find each word in the puzzle, then write the leftover letters in order, top to bottom and left to right, to complete the message.

<p style="text-align: center;">P A N Q U E H U E R U K A S</p> <p>E I Q U I Q U E M</p> <p>M A L P A C A F E R I A S</p> <p>P L T W S C U E C A</p> <p>A A I T F O N D A S C</p> <p>N C M C N I A V A H A</p> <p>A A E Z Q R A L I Y N</p> <p>D M P S O P U L T N M N D</p> <p>A M U S T I D I C A E A L</p> <p>S I C L E I P C H R R N E</p> <p>S H L V L O I A U D M</p> <p>T E I A P L D E E O A</p> <p>R A N P L A S A S</p> <p>A A O E A S A N T I A G O</p> <p>L R P I N O C H E T</p>	<ul style="list-style-type: none"> <li>ALPACA</li> <li>ALTIPLANO</li> <li>ANDES</li> <li>ARPILLERA</li> <li>ATACAMA</li> <li>AYMARA</li> <li>CANDLEMAS</li> <li>CASTELLANO</li> <li>CHINCHILLA</li> <li>COPPER</li> <li>CUECA</li> <li>EMPANADAS</li> <li>FERIAS</li> <li>FONDAS</li> <li>IQUIQUE</li> <li>LLANQUIHUE</li> <li>MAPUCHE</li> <li>MESTIZOS</li> <li>MISTRAL</li> <li>MOAI</li> <li>NERUDA</li> <li>PANQUEHUE</li> <li>PINOCHET</li> <li>RUKAS</li> <li>SANTIAGO</li> <li>VALDIVIA</li> <li>WINES</li> </ul>
--	---

The Atacama desert in  
northern Chile is the  
driest place on the Earth.

## How well do you know CHILE ?

Circle the letter of the best answer for each question.



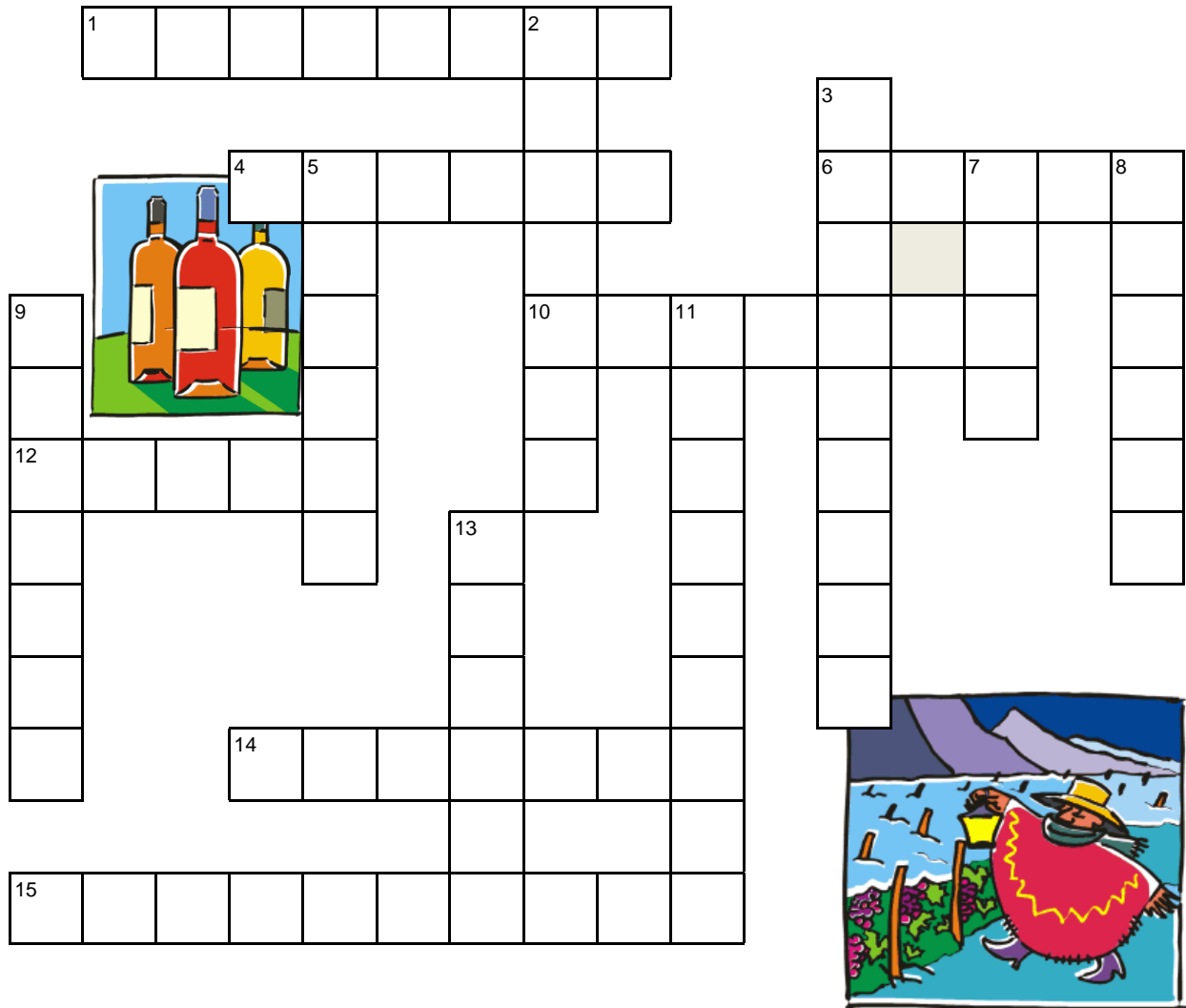
- Which desert is found in northern Chile?
  - Mojave
  - Gobi
  - Atacama
  - Kalahari
- Which type of terrain can NOT be found in Chile?
  - high mountains
  - dense jungle
  - fertile plains
  - icy glaciers
- What is the average width of this country, east to west?
  - 3280 feet (1000 m)
  - 14,110 feet (4300 m)
  - 110 miles (177 km)
  - 2647 miles (4270 km)
- The shape of Chile has been compared to which vegetable?
  - string bean
  - pumpkin
  - brussel sprout
  - cucumber
- A wildlife reserve in Chile is the only one to protect which rodent?
  - brown rat
  - field mouse
  - capybara
  - chinchilla
- A mine in Chile is the world's largest single source of which metal?
  - silver
  - copper
  - titanium
  - nickel
- Which native group held out against Spanish Conquistadors in Chile?
  - the Mapuche
  - the Apache
  - the Veddah
  - the Kayapo
- In which month does Chile celebrate its Independence Day?
  - July
  - August
  - September
  - October

## How well do you know CHILE ? **KEY**

Circle the letter of the best answer for each question.

- Which desert is found in northern Chile?  
A. Mojave  
B. Gobi  
C. **Atacama**  
D. Kalahari
- Which type of terrain can NOT be found in Chile?  
A. high mountains  
B. **dense jungle**  
C. fertile plains  
D. icy glaciers
- What is the average width of this country, east to west?  
A. 3280 feet (1000 m)  
B. 14,110 feet (4300 m)  
C. **110 miles (177 km)**  
D. 2647 miles (4270 km)
- The shape of Chile has been compared to which vegetable?  
A. **string bean**  
B. pumpkin  
C. brussel sprout  
D. cucumber
- A wildlife reserve in Chile is the only one to protect which rodent?  
A. brown rat  
B. field mouse  
C. capybara  
D. **chinchilla**
- A mine in Chile is the world's largest single source of which metal?  
A. silver  
B. **copper**  
C. titanium  
D. nickel
- Which native group held out against Spanish Conquistadors in Chile?  
A. **the Mapuche**  
B. the Apache  
C. the Veddah  
D. the Kayapo
- In which month does Chile celebrate its Independence Day?  
A. July  
B. August  
C. **September**  
D. October

# What About Chile?



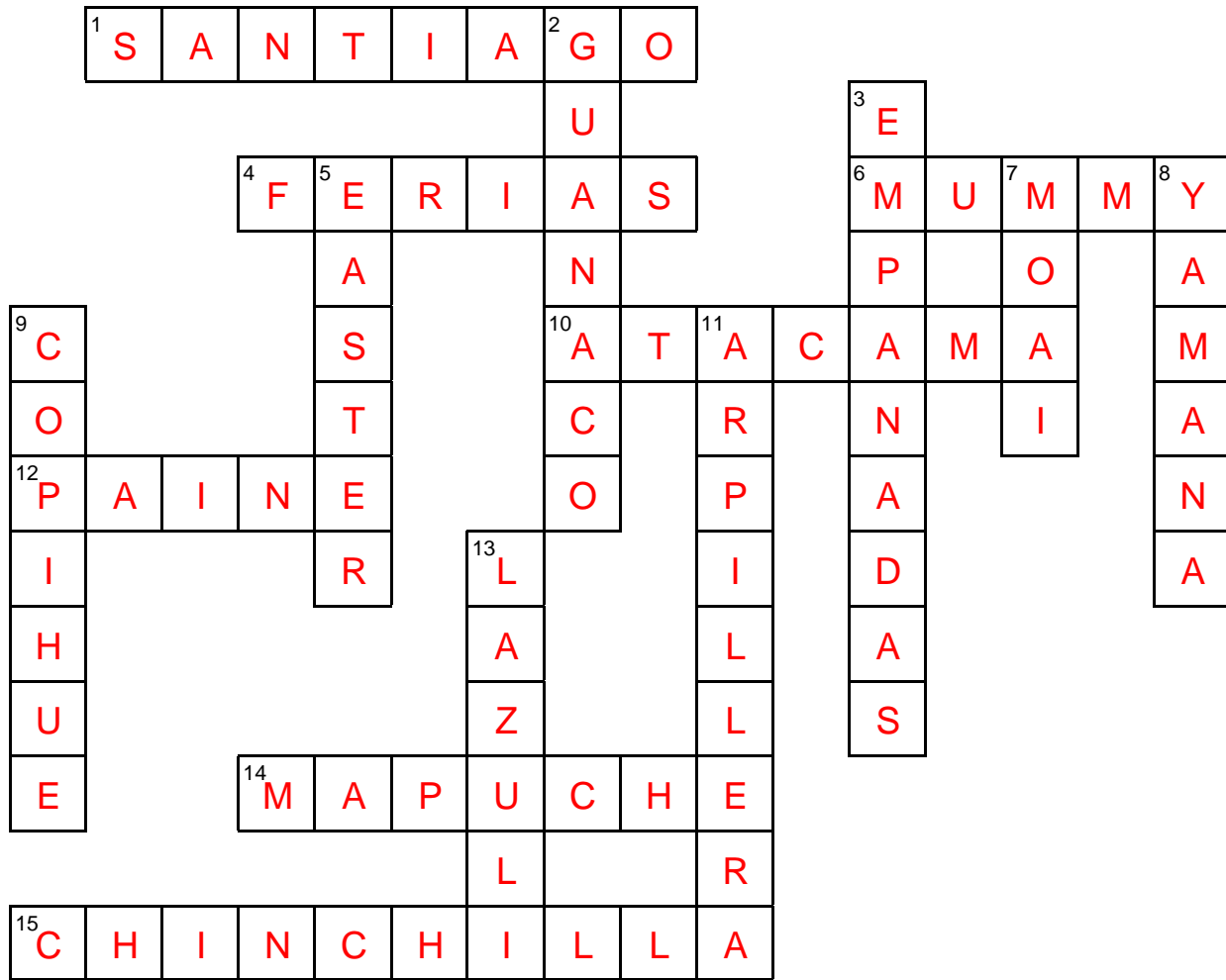
## Down

2. large cousin of the llama
3. stuffed or filled turnovers
5. Rapa Nui = \_\_\_ Island
7. statues on Rapa Nui
8. tribe living on south islands
9. Chile's national flower
11. narative wall hanging
13. lapis \_\_\_ - blue decorative stone

## Across

1. Chile's capital city
4. open-air markets
6. Miss Chile is an ancient \_\_\_
10. driest desert
12. Torres de \_\_\_ National Park
14. tribe living in the Lake District
15. endangered rodent of Chile

# What About Chile? KEY



## Down

2. large cousin of the llama
3. stuffed or filled turnovers
5. Rapa Nui = \_\_\_ Island
7. statues on Rapa Nui
8. tribe living on south islands
9. Chile's national flower
11. narative wall hanging
13. lapis \_\_\_ - blue decorative stone

## Across

1. Chile's capital city
4. open-air markets
6. Miss Chile is an ancient \_\_\_
10. driest desert
12. Torres de \_\_\_ National Park
14. tribe living in the Lake District
15. endangered rodent of Chile